



The Basics - SigmaXL® Version 6.1

- Introducing SigmaXL®
- Why SigmaXL?
- What's Unique to SigmaXL?
- Recall Last Dialog
- Worksheet Manager
- Data Manipulation



SigmaXL[®] + Excel[®] =

Easy Statistical and Graphical Analysis

Cost Effective, Powerful, User Friendly • IDEAL FOR TRAINING

It's Here!

SigmaXL
version **6**

- ✓ Powerful Excel Workbook/Worksheet Manager
- ✓ Value Stream Mapping Template
- ✓ Process Capability and Control Charts for Nonnormal data
- ✓ Response Surface DOE & 3D Surface/Contour Plots
- ✓ New statistical calculators: Fisher's Exact, Probability Distributions

Realize your ROI!

**DOWNLOAD A
30 DAY
FREE TRIAL**

at
www.SIGMAXL.com

Back to
Index



Introducing SigmaXL® Version 6.1

- Powerful.
- User-Friendly.
- Cost-Effective. Priced at \$249, SigmaXL is a fraction of the cost of any major statistical product, yet it has all the functionality most professionals need.
- Quantity, Educational, and Training discounts are available.
- Visit www.SigmaXL.com or call 1-888-SigmaXL (1-888-744-6295) for more information.



Why SigmaXL?

- Measure, Analyze, and Control your Manufacturing, Service, or Transactional Process.
- An add-in to the already familiar Microsoft Excel, making it a great tool for Lean Six Sigma training. Used by Motorola University and other leading consultants.
- SigmaXL is rapidly becoming the tool of choice for Quality and Business Professionals.



What's Unique to SigmaXL?

- User-friendly Design of Experiments with “view power analysis as you design”.
- Measurement Systems Analysis with Confidence Intervals.
- Two-sample comparison test - automatically tests for normality, equal variance, means, and medians, and provides a rules-based yellow highlight to aid the user in interpretation of the output.
- Low p-values are highlighted in red indicating that results are significant.



What's Unique to SigmaXL?

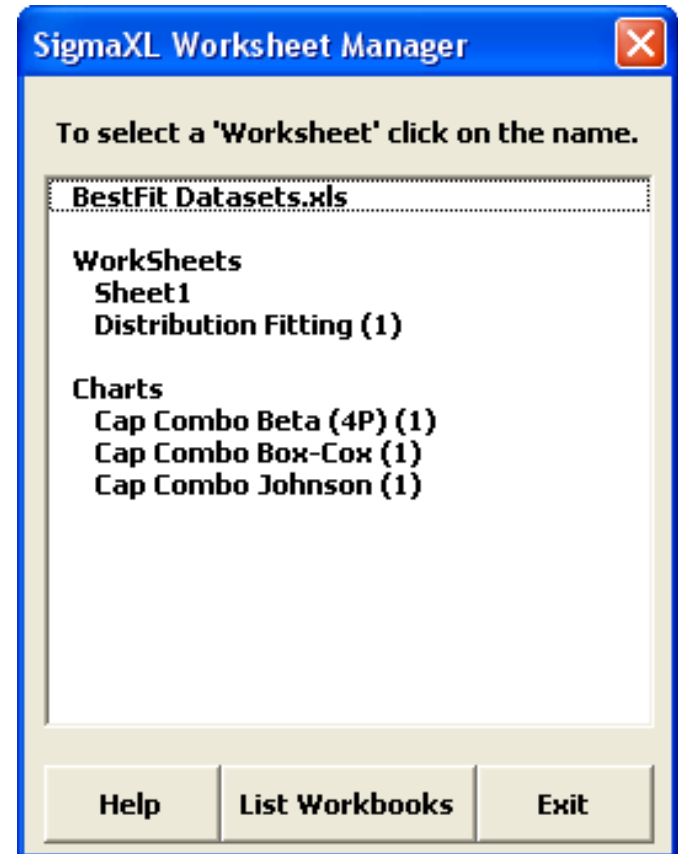
- **Powerful Excel Worksheet Manager**
 - List all open Excel workbooks
 - Display all worksheets and chart sheets in selected workbook
 - Quickly select worksheet or chart sheet of interest
- **Process Capability and Control Charts for Nonnormal data**
 - Best fit automatically selects the best distribution or transformation!
 - Nonnormal Process Capability Indices include Pp, Ppk, Cp, and Cpk
 - Box-Cox Transformation with Threshold so that data with zero or negative values can be transformed!

Recall Last Dialog

- **Recall SigmaXL Dialog**
 - This will activate the last data worksheet and recall the last dialog, making it very easy to do repetitive analysis.
- **Activate Last Worksheet**
 - This will activate the last data worksheet used without recalling the dialog.

Worksheet Manager

- List all open Excel workbooks
- Display all worksheets and chart sheets in selected workbook
- Quickly select worksheet or chart sheet of interest



Data Manipulation

- Subset by Category, Number, or Date
- Random Subset
- Stack and Unstack Columns
- Stack Subgroups Across Rows
- Standardize Data
- Random Number Generators
 - Normal, Uniform (Continuous & Integer), Lognormal, Exponential, Weibull and Triangular.
- Box-Cox Transformation